

JAPAN TRUCK SHOW  
ジャパントラックショー 2018



# ジャパントラックショー 2022

-Exhibition Outline-



The biggest exhibition of truck industry in Japan

12(Thu)・13(Fri)・14(Sat) May 2022

PACIFICO YOKOHAMA

10:00 ▶ 18:00 (the last day close 5:00 pm)

The Japan Truck Show is Japan's largest exhibition of truck and transport related hardware and software assembled under one roof. Having received feedback that "many attendees are company officials with decision-making authority" and "it is a highly cost-effective exhibition that allows for many encounters with new clients," we feature exhibits by many manufacturers to be an exhibition that can lead to new business developments and order reception. We hope that you will please consider exhibiting at the Japan Truck Show 2022 as part of your market cultivation.

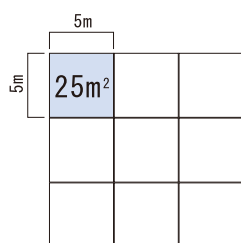
## Booth Charges

Exhibition area • Specification	Booth space	Exhibition fee
Indoor : A Exhibition hall • Space lease	5m × 5m (25 m <sup>2</sup> )	JPY 500,000
Indoor : B Exhibition hall • Standard booth	3m × 3m (9 m <sup>2</sup> )	JPY 320,000
Outdoor : C Piloti • Space lease	5m × 10m (50 m <sup>2</sup> )	JPY 380,000

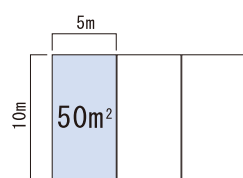
\* Price are without tax, with consumption tax added separately.

## Basic drawing of space lease

### Indoor



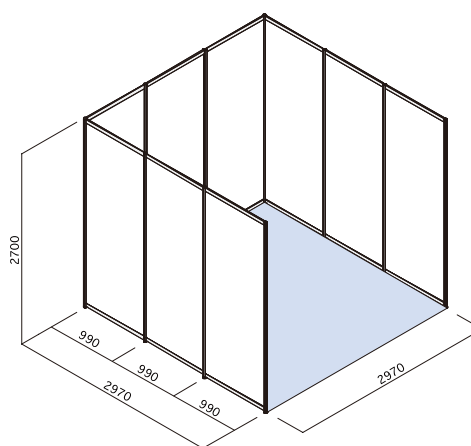
### Outdoor



\* [Space lease] does not include installation of partitions, etc. by the organizer. If you plan to use more than one unit in the outdoor venue, the standard layout adjoins 10-meter side of the units. While there is basically no layout limitation for the indoor venue, we may not be able to accommodate your requests due to the overall layout.

\* [Standard booth lease] include booths already equipped with system panels installed on three sides. The panel installation cost is included in the booth charge.

## Basic drawing of standard booth lease



## Workshops

The show prepares an exclusive space for seminars and workshops hosted by exhibitors.

	Time	Application fee
Workshops	1 frame 1 hour	JPY 50,000

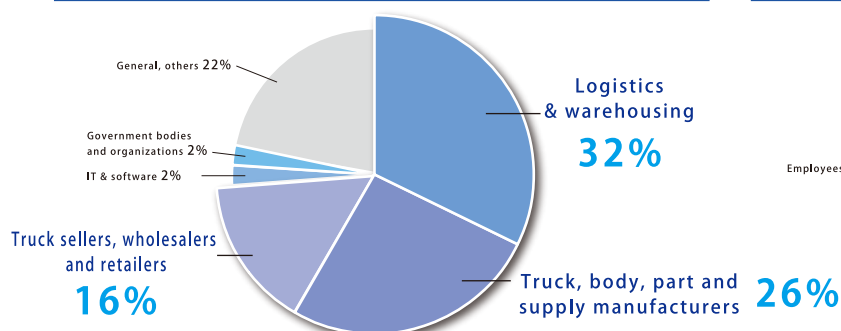
\* Price are without tax, with consumption tax added separately.



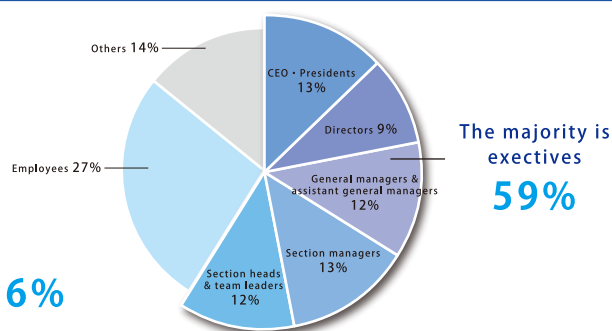
The space is a theatre format that can accommodate 100 people.

# The Japan Truck Show is attended by many buyers

## Business categories



## Visitor statuses



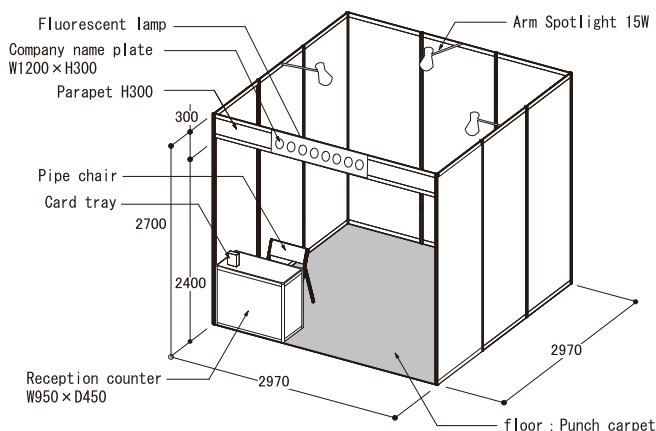


## Options

Functional and convenient exhibition packages are available upon request.

Do not hesitate to contact us if you have never run a booth at a trade show or desire a customized booth.

### ◆Eco booth specification



	Size	Fee
Eco booth package	1 booth	<b>JPY 89,700</b>
	2 booths	<b>JPY 144,300</b>

\* Price are without tax, with consumption tax added separately.

### Standard specification (1 booth)

• Punch carpet	9 m <sup>2</sup>
• Parapet	3 m
• Fluorescent lamp	1
• Arm Spotlight	3 15W
• Electrical outlet	1 Up to 1 kw
• Primary side main line electrical work	2kw Including power usage fee
• Distribution board construction	2kw
• Reception counter	1
• Pipe chair	1
• Card tray	1
• Company name plate	1

## Schedule

Acceptance of Exhibitors' Applications ends on	November 30, 2021 (Tue)
Acceptance of Exhibitors' Payment ends on	December 31, 2021 (Fri)
Briefing for Exhibitors	February 2022 (tentative)
Display installation	May 11, 2022 (Wed)
Trade show dates	May 12 (Thu), 13 (Fri) & 14 (Sat), 2022
Display removal	May 14, 2022 (Sat)

## How to apply

Please fill in the enclosed Application Form for Exhibitors, affix your seal and send it back to the secretariat via post. The Application Form (PDF) is also available for download from our website.

PDF download	<a href="https://www.truck-show.jp/download">https://www.truck-show.jp/download</a>	Secretariat	C/o International Logistics Research & Solution 7F Unicom Ningyocho Bldg., 1-6-10 Nihombashi-Ningyocho, Chuo-ku, Tokyo 103-0013, Japan	FAX : +81-3-3667-1581
--------------	---	-------------	---	-----------------------

## About booth charge payment

Upon the receipt of your application, we will send you an invoice.

Please make the payment to our designated bank account by December 31, 2021 (Fri).

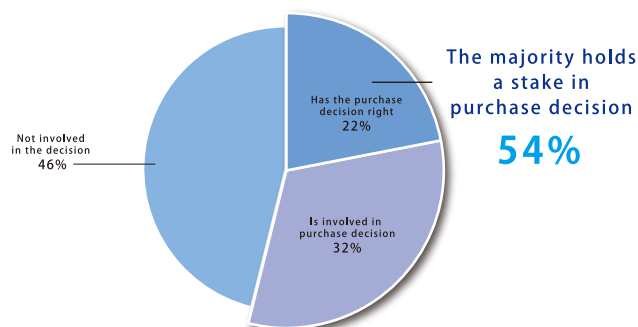
\*Please notify us in writing if you would like to cancel booths or downsize the exhibition space. If the notice is received by us on or before 90 days prior to the first day of the event, we refund 50% of the booth charge. We cannot refund the charge for cancellations with shorter than 90 days' notice.

\*Venue or time change or cancellation: the organizer may change the time or venue of the event or cancel the show due to natural disasters or other force majeure events. In such case, the organizer shall not be liable for any damage suffered by exhibitors.

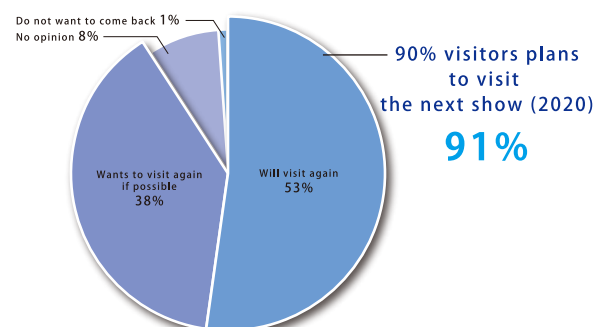
# from the industry with decision-making authority!

Number of visitors 2018 : 51,744

### ◆Permission for Purchases



### ◆Purpose of Visit



\* From the visit questionnaire.

\* Price are without tax, with consumption tax added separately.

## JAPAN TRUCK SHOW 2022

# Advertising program information

### ■Guidebook : 50,000 copies (scheduled)

“JAPAN TRUCK SHOW Guidebook” is the official guidebook of the event distributed to visitors at the reception during the show. The booklet contains the booth map of the venue, PRs of the products on display, details of special events by the organizer, etc. Exhibitors can attract visitors to their booths by publishing advertisements.



\* image

Printing area・Specification	Size	Advertising fee
Outside back cover	A4	JPY 400,000
Inside back cover	A4	JPY 300,000
1P (Inside pages)	A4	JPY 200,000
2P (Inside pages)	A3	JPY 500,000

\* Price are without tax, with consumption tax added separately.

### ■Paper Bag : 5,000 bagsX 2 types total 10,000 bags (scheduled)

The paper bags to be distributed at the show venue feature one side advertisements.  
Take this precious opportunity to promote your brand.



\* image

Printing area・specification	Size	Advertising fee
Paper Bag	400×360 mm	JPY 400,000

\* Price are without tax, with consumption tax added separately.

【JAPAN TRUCK SHOW Secretariat】

TEL.+81-3-3667-1572 FAX.+81-3-3667-1581 URL [www.truck-show.jp](http://www.truck-show.jp) MAIL [info@truck-show.jp](mailto:info@truck-show.jp)

7F Unicom Ningyocho Bldg., 1-6-10 Nihombashi-Ningyocho, Chuo-ku, Tokyo 103-0013, Japan

C/o International Logistics Research & Solution